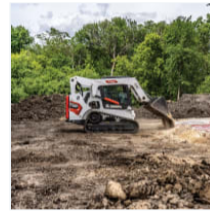


T650 Compact Track Loader



The T650 loader has a vertical lift path and gives you greater lifting capacity and forward reach at full lift-height, for truck loading and pallet handling. Its wide attachments range also opens up many new applications where very high lift capacity, but with a compact-sized loader, are important.

[Request a Quote](#)

[Find a Dealer](#)

T650 Features

[Collapse all](#)

Performance ⁵

▲ Durable Track System

Bobcat track systems are designed for simplicity and durability - and you won't find a tougher track system on the market! The forged steel idlers and steel imbed tracks are built for the longest-possible service life with minimal maintenance. And to guarantee you more uptime, the solid-mounted drive motors and hydraulic hoses are better protected from debris, snags, vibrations, rubbing, mud and sticks.

▲ Loader/Excavator Combination

Combine the speed and agility of a Bobcat loader and the 360-degree house rotation, independent boom swing and multi-function hydraulics of a Bobcat excavator. When you add the industry's widest choice of attachments, it's easy to see how this potent combination can outwork a tractor-loader-backhoe when site access and working space are limited.

▲ Instrumentation

The optional M-Series Deluxe Instrumentation Panel brings the latest advances in communication, monitoring, productivity and control to your Bobcat® skid-steer loader or compact track loader. It monitors key loader functions, communicates alerts and provides additional attachment information to track usage. Using the ultra-sharp LCD screen and simple interface, you will be able to access data and helpful notifications to keep your loader operating at peak capacity with maximum uptime.

▲ Smart Cooling

When the dust flies, the machine temperature rises and you're pushing to finish a project, you need a cooling system that won't let you down! The patented Bobcat® cooling system features a dual-path design that cools more efficiently, with a quiet fan that only turns as fast as needed. For added reliability, the radiator and hydraulic oil cooler are safely protected from jobsite hazards.

▲ Superior Lift Arms

Bobcat Skid-Steer Loaders offer you the choice of two lift-path options, so we're sure to meet your needs. Vertical lift-path machines provide more reach at full lift height, while radius lift-path models offer maximum reach at truck-bed height. Both options feature our durable and patented single-plane design which reduces side-to-side lift arm movement and minimises load on the pins.

▲ **Comfort** ²

▲ **Improved Visibility**

For safety and increased efficiency, Bobcat® skid-steer loader (SSL) and compact track loader (CTL) cabs are designed for the best possible all-around visibility. As you grade next to a building or load the machine on a trailer, you'll gain better sight lines for easier and faster operation. You can easily see the bucket corners and cutting edge from your seat. Your tracks or tyres are also visible without raising the loader arms.

▲ **Pressurized Cab**

In your line of work, you have to dive right in – where the dirt, dust, mud and debris are at their worst. That's why you need a Bobcat loader - our enclosed cabs have a best-in-class pressurised interior space that keeps down dust to a minimum, keeping you clean and comfortable. The one-piece seal and unique, curved door pocket ensure that you enjoy the best-possible protection. Keep warm air in the cab during cold weather, and ensure that cool air keeps you comfortable on hot days.

▲ **Uptime Protection** ³

▲ **Durable Track System**

Bobcat track systems are designed for simplicity and durability - and you won't find a tougher track system on the market! The forged steel idlers and steel imbed tracks are built for the longest-possible service life with minimal maintenance. And to guarantee you more uptime, the solid-mounted drive motors and hydraulic hoses are better protected from debris, snags, vibrations, rubbing, mud and sticks.

▲ **Machine Protection**

With Bobcat® skid-steer loaders (SSL) and compact track loaders (CTL), you're ready for almost anything that you could possibly encounter on the jobsite. The radiator and hydraulic oil cooler are protected from danger, while hoses are routed through the loader arms and frame uprights for extra protection. Quick couplers are mounted directly into the front plate of the lift arm. The solid-steel tailgate has no cooling holes or other openings for intrusions that could damage the machine.

▲ **Uptime Protection**

The Bobcat reputation for reliable equipment and maximum uptime protects your own reputation for timely, productive work. These better-built loaders rely on a range of features that help minimise maintenance and protect your machine: machine shutdown protection, self-diagnostics, battery run-down protection, cold weather protection and other features. What's more, Bobcat skid-steer loaders feature the industry's only maintenance-free chaincase, which further reduces maintenance and gives you added peace of mind.

▲ **Serviceability** ⁴

▲ **Panoramic Serviceability**

No other loaders are as easy to access for maintenance and servicing as Bobcat® skid-steer loaders (SSL) and compact track loaders (CTL). You receive easy, full access to the engine checks and fills, filters and battery. Unlike other brands, you do not need to raise the lift arms to service the machine. So you can spend your time completing maintenance work, rather than struggling to gain access.

▲ **Transverse Engine and Belt Drive**

Bobcat® loaders can be serviced from one side thanks to the exclusive belt-drive system. This durable technology with a multi-groove Kevlar™ belt allows your loader engine to run slower, which reduces noise and gives your machine longer durability. This optimised engine-to-pump package is also more efficient.

▲ **Hydraulic Oil Site Gauge**

You can check your hydraulic oil level quickly and easily as you walk by your machine. Always keep an eye on hydraulic oil levels and simplify your daily checks.

▲ **Grease Point Access**

Bobcat makes maintenance simpler and faster with easy-to-access grease point locations on critical pivot points. So you don't have to lie on the ground or stand on the wheels or tracks to grease the pins.

▲ **Attachment Versatility** ⁴

▲ **Bob-Tach**

With the standard Bob-Tach® mounting system you can change an attachment on your loader in less than a minute. So you can easily use different attachments - bucket, auger, landscape rake, grapple and many others - throughout your day. Developed more than 35 years ago, the Bob-Tach system is time-tested.

▲ **Do More**

Bobcat attachments help you do so much more. The versatility of our attachments and the support from the Bobcat dealer network is an unbeatable combination. Quick couplers give you clean, rapid attachment changes every time, and the attachment control kit simplifies operation. On selected attachments, high-flow hydraulics provide a big power boost.

▲ **Instrumentation**

The optional M-Series Deluxe Instrumentation Panel brings the latest advances in communication, monitoring, productivity and control to your Bobcat® skid-steer loader or compact track loader. It monitors key loader functions, communicates alerts and provides additional attachment information to track usage. Using the ultra-sharp LCD screen and simple interface, you will be able to access data and helpful notifications to keep your loader operating at peak capacity with maximum uptime.

▲ **Power Bob-Tach**

With the optional Power Bob-Tach™ mounting system, you can swap non-hydraulic attachments without even leaving your seat. Just press a dash switch - it engages the wedges into the attachment. The system locks the levers and keeps the attachment secure. This system is also the fastest method to connect hydraulic attachments to your loader because all you have to do is hook up the hoses after you have secured the attachment.

T650 Specifications

Similar Machines



T450 Compact Track Loaders

The Bobcat T450 is known for its ability to maneuver the smallest job sites while offering impressive power for mid-range jobs.

Horsepower	61.1 hp
Rated Operating Capacity (ISO)	635 kg
Operating Weight	2789 kg

T590 Compact Track Loader

Unload and place pallets of materials more easily with the vertical-lift-path Bobcat® T650 compact track loader.

Horsepower	66 hp
Rated Operating Capacity (ISO)	992 kg
Operating Weight	3513 kg

T650 Compact Tra

The T650 Compact Trac capacity and forward re: and pallet handling.

Horsepower	
Rated Operating Capacity (ISO)	
Operating Weight	



^ Key Specifications

T650 Compact Track Loader

Horsepower	74.3 hp
Rated Operating Capacity (ISO)	1166 kg
Operating Weight	4282 kg

^ Engine

T650 Compact Track Loader

Emissions Tier (EPA)	Interim Tier 4
Engine Cooling	Liquid
Engine Fuel	Diesel
Horsepower	74.3 hp
Turbocharged Engine	Yes

^ Performance

T650 Compact Track Loader

Rated Operating Capacity (ISO)	1166 kg
Operating Capacity (50% of Tip)	1665 kg
Tipping Load	3331 kg
Operating Weight	4282 kg
Travel Speed	10.6 km/h
Travel Speed (2-speed option)	17.2 km/h
Ground Pressure (Rubber)	0.4 bar

^ Capacities

T650 Compact Track Loader

Fuel Tank	103 L
-----------	-------

^ Hydraulic System

T650 Compact Track Loader

System Relief @ Quick Couplers	241.32 bar
Auxiliary Std Flow	87.1 L/min
Auxiliary High Flow	115.5 L/min

▲ Features**T650 Compact Track Loader**

Joystick Control	Optional
Air Conditioning	Optional
Backup Alarm	Standard
BICS System (Interlock)	Standard
Cab Heater	Optional
Operating Lights	Standard
Suspension Seat	Standard
Two Speed Travel	Optional
Deluxe Instrumentation	Optional
Engine Shutdown	Standard
Hydraulic Bucket Positioning	Optional
High Flow Option	Optional
Auxiliary Hydraulics	Standard
Bob-Tach Attachment System	Standard
Power Bob-Tach	Optional
ACS (Switchable Controls)	Optional
Ride Control	Optional
Horn	Standard
Cab Enclosure	Optional
Sound Option	Optional
Rear Window	Standard
Seat Belt	Standard
Spark Arrestor Muffler	Standard
Lift-Arm Support	Standard
Power Qtach	Optional
Spark Arrestor	Turbo

← Dimension**T650 Compact Track Loader**

Length	2753 mm
Length without Attachment	2753 mm
Length with Standard Bucket	3475 mm
Width	1852 mm
Width (with bucket)	1880 mm
Height	2065 mm
Height with Operator Cab	2065 mm
Height to Bucket Hinge Pin	3150 mm
Reach @ Maximum Height	869 mm
Turning Radius	2228 mm
Length of track on ground	1499 mm
Track Width	320 mm
Track Width - Optional	450 mm