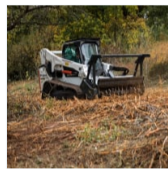


T770 Compact Track Loader



With 11 ft. of vertical lift, the Bobcat® T770 compact track loader is primed for loading trucks, grinders and hoppers as well as many other jobs. The vertical lift path allows you to easily place cargo and tackle demanding tasks.

[Request a Quote](#)

[Find a Dealer](#)

T770 Features

[Collapse all](#) -

Performance ⁵

▶ Durable Track System

Bobcat track systems are designed for simplicity and durability - and you won't find a tougher track system on the market! The forged steel idlers and steel imbed tracks are built for the longest-possible service life with minimal maintenance. And to guarantee you more uptime, the solid-mounted drive motors and hydraulic hoses are better protected from debris, snags, vibrations, rubbing, mud and sticks.

▶ Loader/Excavator Combination

Combine the speed and agility of a Bobcat loader and the 360-degree house rotation, independent boom swing and multi-function hydraulics of a Bobcat excavator. When you add the industry's widest choice of attachments, it's easy to see how this potent combination can outwork a tractor-loader-backhoe when site access and working space are limited.

▶ Instrumentation

The optional M-Series Deluxe Instrumentation Panel brings the latest advances in communication, monitoring, productivity and control to your Bobcat® skid-steer loader or compact track loader. It monitors key loader functions, communicates alerts and provides additional attachment information to track usage. Using the ultra-sharp LCD screen and simple interface, you will be able to access data and helpful notifications to keep your loader operating at peak capacity with maximum uptime.

▶ Smart Cooling

When the dust flies, the machine temperature rises and you're pushing to finish a project, you need a cooling system that won't let you down! The patented Bobcat® cooling system features a dual-path design that cools more efficiently, with a quiet fan that only turns as fast as needed. For added reliability, the radiator and hydraulic oil cooler are safely protected from jobsite hazards.

▶ Superior Lift Arms

Bobcat Skid-Steer Loaders offer you the choice of two lift-path options, so we're sure to meet your needs. Vertical lift-path machines provide more reach at full lift height, while radius lift-path models offer maximum reach at truck-bed height. Both options feature our durable and patented single-plane design which reduces side-to-side lift arm movement and minimises load on the pins.

Comfort ²

▶ Improved Visibility

For safety and increased efficiency, Bobcat® skid-steer loader (SSL) and compact track loader (CTL) cabs are designed for the best possible all-around visibility. As you grade next to a building or load the machine on a trailer, you'll gain better sight lines for easier and faster operation. You can easily see the bucket corners and cutting edge from your seat. Your tracks or tyres are also visible without raising the loader arms.

▶ Pressurized Cab

In your line of work, you have to dive right in - where the dirt, dust, mud and debris are at their worst. That's why you need a Bobcat loader - our enclosed cabs have a best-in-class pressurised interior space that keeps down dust to a minimum, keeping you clean and comfortable. The one-piece seal and unique, curved door pocket ensure that you enjoy the best-possible protection. Keep warm air in the cab during cold weather, and ensure that cool air keeps you comfortable on hot days.

Uptime Protection ³

^ Durable Track System

Bobcat track systems are designed for simplicity and durability - and you won't find a tougher track system on the market! The forged steel idlers and steel imbed tracks are built for the longest-possible service life with minimal maintenance. And to guarantee you more uptime, the solid-mounted drive motors and hydraulic hoses are better protected from debris, snags, vibrations, rubbing, mud and sticks.

^ Machine Protection

With Bobcat® skid-steer loaders (SSL) and compact track loaders (CTL), you're ready for almost anything that you could possibly encounter on the jobsite. The radiator and hydraulic oil cooler are protected from danger, while hoses are routed through the loader arms and frame uprights for extra protection. Quick couplers are mounted directly into the front plate of the lift arm. The solid-steel tailgate has no cooling holes or other openings for intrusions that could damage the machine.

^ Uptime Protection

The Bobcat reputation for reliable equipment and maximum uptime protects your own reputation for timely, productive work. These better-built loaders rely on a range of features that help minimise maintenance and protect your machine: machine shutdown protection, self-diagnostics, battery run-down protection, cold weather protection and other features. What's more, Bobcat skid-steer loaders feature the industry's only maintenance-free chaincase, which further reduces maintenance and gives you added peace of mind.

^ Serviceability ⁴

^ Panoramic Serviceability

No other loaders are as easy to access for maintenance and servicing as Bobcat® skid-steer loaders (SSL) and compact track loaders (CTL). You receive easy, full access to the engine checks and fills, filters and battery. Unlike other brands, you do not need to raise the lift arms to service the machine. So you can spend your time completing maintenance work, rather than struggling to gain access.

^ Transverse Engine and Belt Drive

Bobcat® loaders can be serviced from one side thanks to the exclusive belt-drive system. This durable technology with a multi-groove Kevlar™ belt allows your loader engine to run slower, which reduces noise and gives your machine longer durability. This optimised engine-to-pump package is also more efficient.

^ Hydraulic Oil Site Gauge

You can check your hydraulic oil level quickly and easily as you walk by your machine. Always keep an eye on hydraulic oil levels and simplify your daily checks.

^ Grease Point Access

Bobcat makes maintenance simpler and faster with easy-to-access grease point locations on critical pivot points. So you don't have to lie on the ground or stand on the wheels or tracks to grease the pins.

^ Attachment Versatility ⁴

^ Bob-Tach

With the standard Bob-Tach® mounting system you can change an attachment on your loader in less than a minute. So you can easily use different attachments - bucket, auger, landscape rake, grapple and many others - throughout your day. Developed more than 35 years ago, the Bob-Tach system is time-tested.

^ Do More

Bobcat attachments help you do so much more. The versatility of our attachments and the support from the Bobcat dealer network is an unbeatable combination. Quick couplers give you clean, rapid attachment changes every time, and the attachment control kit simplifies operation. On selected attachments, high-flow hydraulics provide a big power boost.

^ Instrumentation

The optional M-Series Deluxe Instrumentation Panel brings the latest advances in communication, monitoring, productivity and control to your Bobcat® skid-steer loader or compact track loader. It monitors key loader functions, communicates alerts and provides additional attachment information to track usage. Using the ultra-sharp LCD screen and simple interface, you will be able to access data and helpful notifications to keep your loader operating at peak capacity with maximum uptime.

^ Power Bob-Tach

With the optional Power Bob-Tach™ mounting system, you can swap non-hydraulic attachments without even leaving your seat. Just press a dash switch - it engages the wedges into the attachment. The system locks the levers and keeps the attachment secure. This system is also the fastest method to connect hydraulic attachments to your loader because all you have to do is hook up the hoses after you have secured the attachment.

T770 Specifications

Show less

Similar Machines



T450 Compact Track Loaders

The Bobcat T450 is known for its ability to maneuver the smallest job sites while offering impressive power for mid-range jobs.



T590 Compact Track Loader

Unload and place pallets of materials more easily with the vertical-lift-path Bobcat® T650 compact track loader.



T650 Compact Track Loader

The T650 Compact Track Loader reach at full lift-height, for truck

^ Key Specifications

T770 Compact Track Loader

| | |
|--------------------------------|---------|
| Horsepower | 92.0 hp |
| Rated Operating Capacity (ISO) | 1618 kg |
| Operating Weight | 4686 kg |

^ Model

T770 Compact Track Loader

| | |
|--|----------|
| Emissions Tier (EPA) | T3 |
| Loader Series | M-Series |
| Rated Operating Capacity (35% of tipping load) | 1618 kg |
| Tipping Load | 4624 kg |
| Height to Hinge Pin | 3338 mm |
| Lift Arm Path | Vertical |

^ Size and Speed

T770 Compact Track Loader

| | |
|---|------------|
| Operating Weight | 4686 kg |
| Bucket Width | 2032 mm |
| Cab Height | 2065 mm |
| Travel Speed – Single Speed | 10.6 km/hr |
| Travel Speed – High Range (optional 2-Speed travel) | 17.2 km/hr |

^ Engine

T770 Compact Track Loader

| | |
|--------------------|---------------|
| Horsepower | 92.0 hp |
| Type | Turbo Charged |
| Fuel Tank Capacity | 165.8 L |

▲ Tracks/Undercarriage**T770 Compact Track Loader**

| | |
|--|----------|
| Track Width – Standard | 450 mm |
| Track Width – Optional | - |
| Ground Pressure (with standard tracks) | 4.1 psi |
| Ground Pressure (with optional tracks) | - |
| Length of Track on Ground | 1618 mm |
| Roller Suspension | Optional |
| Torsion Suspension | - |
| Grease Cylinder Track Tensioning | Standard |

▲ Control Options**T770 Compact Track Loader**

| | |
|---|----------|
| Bobcat Standard (foot pedals/steering levers) | Standard |
| Selectable Joystick Control (SJC) | Optional |
| Radio Remote Control (SJC required) | Optional |

▲ Machine Features**T770 Compact Track Loader**

| | |
|---|----------|
| Air Ride Seat | Optional |
| Back-up Alarm & Horn | Standard |
| Bobcat Interlock Control System (BICSTM) | Standard |
| Cab with Heat | Optional |
| Cab with Heat & Air Conditioning | Optional |
| Deluxe Instrumentation (includes Keyless Start) | Optional |
| Hydraulic Bucket Positioning | Optional |
| Front and Rear Work Lights | Standard |
| Radio | Optional |
| Ride Control | Optional |
| ROPS/FOPS Approved Cab Structure | Standard |
| Sound Reduction Package | Optional |

^ Features for Attachments**T770 Compact Track Loader**

| | |
|---|-------------|
| Attachment Control Kit | Optional |
| Bob-Tach® Mounting System | Standard |
| Power Bob-Tach™ | Optional |
| Fingertip Auxiliary Hydraulics Control | Standard |
| Hydraulic System Pressure | 241 Bar |
| Hydraulic Standard Flow | 87.1 L/min |
| Hydraulic High Flow (optional) | 138.2 L/min |
| Pressure Release Hydraulic Quick Couplers | Standard |