



Bobcat®

New

COMPACT EXCAVATORS

E30



One Tough Animal™

SPECIFICATIONS - E30

WEIGHTS

Operating weight (ISO 6016)	3069 kg
Ground pressure	29.6 kPa

ENGINE

Make / model	Kubota / D1305
Fuel	Diesel
Number of cylinders	3
Displacement	1.26L
Maximum power (SAE J1995)	18.5 kW/ 24.8HP
Maximum torque (SAE J1995)	81.3 Nm

PERFORMANCE

Digging force, long arm (ISO 6015)	15780 N
Digging force, bucket (ISO 6015)	25140 N
Drawbar pull	29300 N
Travel speed (low)	2.9 km/h
Travel speed (high)	5.2 km/h

HYDRAULIC SYSTEM

Pump type	Dual outlet variable displacement piston pump with gear pumps
Piston pump capacity	67.5 L/min
Auxiliary flow	53.8 L/min
Auxiliary relief	180.0 bar

SWING SYSTEM

Boom swing, left	70°
Boom swing, right	55°
Swing Speed	9.3 RPM

FLUID CAPACITIES

Cooling system	4.4 L
Engine oil and filter	4.0 L
Fuel tank	34.4 L
Hydraulic Tank	10.2L
Hydraulic system	23.0 L

STANDARD FEATURES

- 1550 mm dozer blade
- 300 mm Steel tracks
- Auto shift travel
- Auxiliary hydraulics with quick couplers on boom
- Blade float feature
- Control console locks
- Cupholder
- Engine/hydraulic monitor with shutdown
- 0.09 m³ (24.5") GP Bucket
- Advanced Diagnostics
- Heavy Counterweight
- Fuel Filter with Sediment Bowl
- Fingertip auxiliary hydraulic control
- Horn
- Hydraulic joystick controls
- Retractable seat belt
- Suspension seat
- FOPS/TOPS/ROPS* Canopy
- Two-speed travel
- Work lights Boom & Canopy
- Long Blade
- Minimum tail swing
- Hydraulic & Travel control lockouts

OPTIONS

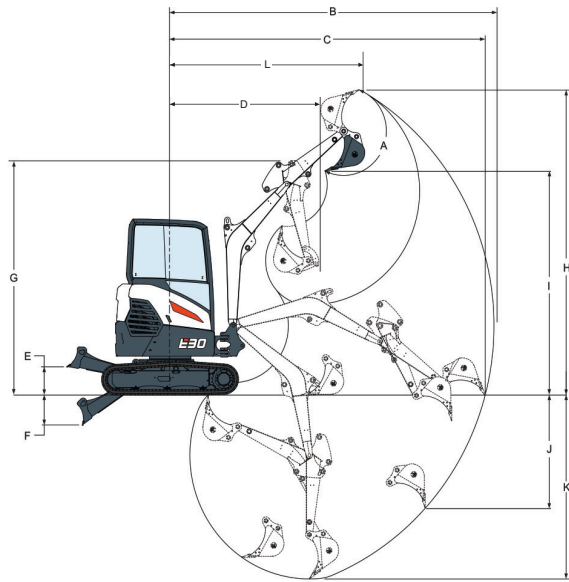
- HVAC Cabin
- Rubber Track / Rubber Pad on steel Track
- Trenching Bucket 12"(0.05 m³) / 24"(0.07 m³)
- 0.07m³ (24") GP Buckect
- Grading Bucket & Bucket Tilt
- Bucket clamp / Bucket Grapppler
- Breaker
- Augur
- Flail Mower
- Hydraulic Coupler
- Travel Motion Alarm
- Load Holding Valve - Boom & Arm

1. Rops-Roll Over Protective Structure (ISO 12117-2-2008), Tops-Tip Over Protective Structure (ISO 12117-2000, En 13531-2001), Fops (Level 1) - Falling Object Protective Structure (Top Guard) ISO 10262-1998

Scan to visit our website



WORKING RANGE

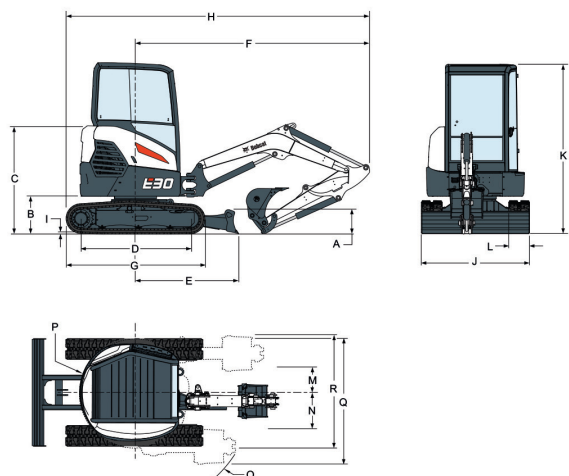


All Dimensions are in mm

	A	B	C	D	E	F
E30	185°	4990	4876	2135	385	420

	G	H	I	J	K	L
E30	3239	4468	3272	1916	2906	2992

DIMENSIONS



All Dimensions are in mm

	A	B	C	D	E	F	G	H	I
E30	319	539	1540	1543	1462	3345	1965	4327	21

	J	K	L	M	N	O	P	Q	R
E30	1550	2438	300	351	565	1726	864	1808	1599



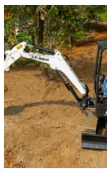
Bobcat®

Doosan Bobcat India

HTC Towers, 6TH Floor, No. 41, GST Road, Guindy, Chennai - 600 032.

+91 96000 04852 www.bobcat.com

E30 Mini Excavator



The new Bobcat® E30 mini excavator is a new generation of Bobcat conventional tail swing model offering higher stability coupled with excellent performance and further enhanced controllability. This machine offers a great mix of performance, stability, and operator comfort with conventional tail swing.

[Request a Quote](#)

[Find a Dealer](#)

[Download Leaflet](#)

E30 Features

[Collapse all](#) -

Performance ⁶

Advanced Hydraulics

Whether you're traveling across a jobsite, backfilling, or digging, your excavator's hydraulic system contributes to performance more than any other feature. When compared to other brands, advanced hydraulics on Bobcat® excavators deliver the most horsepower in working range.

Predictable Control

Bobcat® compact excavators deliver the house, boom, arm and bucket control you expect in the most challenging work environments. It's the confidence in these precise movements that determines whether you complete the job using your machine, or with two workers and a pair of shovels.

Fingertip Boom Swing Control

Bobcat® excavator controls allow you to make fine movements with low effort and maximum comfort – so you can get precise results in less time, with less fatigue. With the boom swing control on the joystick, you get more floor space and foot room for better operator comfort on long, tiring jobs.

2-Speed Travel

Maneuver faster with optional 2-Speed travel. The faster you can move on your jobsite, the quicker you can complete your work. For long-haul jobs or work on large jobsites, 2-Speed travel increases your productivity all day long.

Auto Shift Travel

Auto-shift travel shifts the machine out of high range and back automatically, offering superb travel performance without having to manually downshift. It automatically transitions the travel motors to and from high range, giving you greater tractive effort with no manual shifting. A directional lug track also provides a smoother ride and less vibration when traveling.

Blade Float

Simplify grading and leveling. Blade float exerts a minimal, consistent down-force on the blade, with minimal operator input.

Comfort ⁶

Premium Cab

Premium comfort gives you the endurance to power through long days and tough jobs. When you step inside the Bobcat compact (mini) excavator cab, you'll see refinements everywhere you look, including plenty of headroom and legroom, clear visibility, and a larger suspension seat. Each feature has been designed to help keep you working all day long.

Maximum Headroom and Legroom

When you step inside the redesigned cab of a Bobcat compact (mini) excavator, you'll find more space everywhere you look. It provides maximum headroom and legroom for dependable comfort all day long. Additionally, the suspension seat is wider and floorspace has been increased by 29 percent when compared to previous generations. Even tall operators will be comfortable with plenty of headroom.

Clear Visibility

When you have clear visibility to your work area, your productivity can take off. Bobcat compact (mini) excavators are engineered with narrower cab pillars and 15 percent more glass surface area. Together, they give you the industry's best visibility to your workgroup and blade cutting edge. Other features include a large, Level 1 FOPS (falling object protection system)-certified top window, automatic on/off work lights, and an optional retractable sun visor to block out distracting light.

▲ Operator-Friendly Controls

Simple, ergonomic controls keep you productive all day long. Control your attachments and travel with precision, flexibility and low fatigue. Feel the quality at your fingertips, as the newly designed joysticks fit better in your hands.

▲ Reduced Vibration

Inside the premium cab of Bobcat compact (mini) excavators, you'll experience dramatically reduced vibration. Many features contribute to the improvement, including a dual-flange track roller system, a tighter connection between body panels and robust hinges and latches. They all work together to make operating your Bobcat compact excavator more comfortable for longer, more productive days on the jobsite.

▲ Adjustable Seat

Adjustable seats on Bobcat compact excavators set new standards for comfort. No matter your height or weight, it's easy to find an accommodating operating position. With the optional heated seat, cold weather won't slow you down.

▲ Uptime Protection ⁶

▲ In-Track Swing Frame

Bobcat compact excavators are engineered to operate in the smallest of workspaces. Excavators feature the exclusive in-track swing frame, which allows you to get closer to your work. The swing castings and cylinders stay within the tracks when you dig in an offset position.

▲ Protection Technology

Bobcat® compact excavators are designed to prevent problems before they occur. Electronics meet or exceed military requirements for sealing, moisture, shock and vibration. Automatic glow plugs deliver easier starts and longer starter life, while battery run-down protection protects against vandals or forgetful operators.

▲ Protected Components

Exposed hoses, weaker components and inferior design may mean a trip to the shop when you need your machine the most. Bobcat® compact excavators are equipped with a durable tailgate, protected hydraulic lines, smarter hose routing and a redesigned workgroup.

▲ Easy Machine Tie Downs

Get on and off the jobsite faster. Secure your load quickly with accessible tie-downs. Bobcat® compact (mini) excavators come standard with four tie-down points that are easy to reach.

▲ Integrated Slew Brakes

Integrated slew brakes hold your load steady on slopes for more accurate placement and while your excavator is trailered.

▲ X-Frame Undercarriage

With better ground clearance, the X-frame undercarriage improves your performance in difficult conditions. Dirt and other materials easily pass through this undercarriage, making cleanup faster and leaving less debris on the trailers.

▲ Serviceability ²

▲ Panoramic Serviceability

Your time should be used completing your work instead of gaining access to components. With Bobcat® compact excavators, it's easy to make maintenance part of your routine. Perform preventative maintenance with industry-leading service access and simple checkpoints. You'll complete essential maintenance as scheduled and reduce your operating costs.

▲ Training Resources

Train operators and technicians in the safe operating and servicing of Bobcat® equipment. Operator training courses, safety videos and other training materials are available at your Bobcat dealer's parts department or by visiting the training resources.

▲ Attachment ⁴

▲ Attachment Versatility

With Bobcat® compact excavators, you can do more than just dig with more than a dozen attachments to choose from. Easily add a hydraulic clamp. Use the standard auxiliary quick couplers. Many attachments can also be used with your Bobcat loader.

▲ Standard X-Change

The exclusive X-Change™ quick-tach mounting system provides multi-attachment capabilities. It's designed to maintain arm-to-bucket geometry for top breakout force.

▲ Selectable Auxiliary Hydraulic Flow

Many Bobcat® compact excavators are equipped with selectable auxiliary hydraulics. Three flow rates help you optimize the response of hydraulic attachments such as PowerTilt® and Hydra-Tilt™ swing accessories, clamps, grapples, hydraulic breakers and auger attachments.

▲ Pro Clamp System

As an alternative to a clamp attachment, the Pro Clamp system consists of a base component, standard pin-on work tool and optional grading tool. Grab large, small or irregular objects with greater confidence. Create a smooth trench bottom and clean up spoil piles quickly.

E30 Specifications

Show more